

Area Marking

Create a safer, more efficient workplace



About BRADY



Once you have worked with BRADY, our name will stick with you, (just like our labels) because BRADY is one of the world's leading labelling and identification specialists.

Innovative

At BRADY we continue to improve. We have many customers from all industries, and we strive to be ahead of their needs by continuing to invest in research for even more performant solutions. By developing more user-friendly and efficient concepts, we give our thousands of customers the best in the market.

Strength

At BRADY, we believe our biggest strength is the wide range of identification and safety solutions we can offer our customers, whether it's labelling the smallest component or complete signage for an entire warehouse. We're also proud to offer many products and services - from printers, scanners and software to service contracts and on-site training - that compliment any identification job. And don't forget, our wide network of expert distributors can always offer you a tailor-made solution to meet your specific requirements.

Trust

For over a hundred years, BRADY has been connected with quality, trust and stability. We demand the best for your products and services, because we know, better than anyone, the importance of good and reliable identification. Identification looks like a small detail, but every professional knows that this kind of detail is crucial to any business.

Inform

We also have specialised dealers in your region, who can answer all your identification, safety and labelling questions, specific to your activity. They will be happy to provide you with all kinds of options and solutions with no obligation.

Microsoft is a trademark of Microsoft Corporation, Bluetooth is a trademark of Bluetooth Sig, Inc., Android is a trademark of Google Inc.



Brady products are sold on the condition that the purchaser will test them in actual use and determine for himself/herself their suitability to his/her intended purpose. Brady warrants to the purchaser that Brady products are free from defects in material and workmanship but limits its obligation under this warranty to the replacement of the product which has been shown to Brady's satisfaction to have been defective at the time of its purchase.

The warranty does not extend to any persons who have acquired the product from the purchaser. It is in lieu of any other warranty, including every warranty of sale-ability, marketability or suitability for the intended purpose, and is also in lieu of any other obligation or liability on the part of Brady.

Under no circumstances will Brady be liable for losses, damage, costs or subsequent damage of whatever nature which may arise in connection with the use of, or inability to use, Brady's products.

Area Marking: why?

Creating a totally safe work environment requires several elements: clear signage and lockout tagout procedures are essential but should be complimented by clear area marking.

Brady offers a complete range of additional marking methods to ensure that floor areas, steps, railings and other relevant areas can be identified as danger zones.

Brady will help you find the solution that works best for your environment!



Floor marking tape



Paintstripe & floor marking area



Photoluminescent area marking



Anti-skid products



Barricade tape

TABLE OF CONTENTS

- 4 ToughStripe - Removable area marking tape
- 12 Permanent area marking tape
- 14 PaintStripe & floor marking paint
- 16 Photoluminescent area marking
- 20 Anti-skid products
- 21 Barricade tapes
- 23 Warning posts & chains
- 26 Floor stands
- 27 Safety bumpers



Warning posts & chains



ToughStripe is the ideal floor marking tape in a lean environment where the regular application and replacement of floor marking is crucial.

Superior durability

Spend less time replacing damaged or worn lines for a better looking, more efficient facility.

- Withstands forklift traffic without tearing or lifting
- Low profile design minimises tears and scratches from skids, pallet jacks, etc.
- Rugged polyester with ultra aggressive adhesive



High visibility

Get the same visibility of painted floor markings – and pay less.

- High gloss surface shines like new paint
- Low-profile minimises debris build-up along the edges that occurs with thicker (extruded) floor tapes
- Surface resists marks and smudges and cleans up like new
- Available in a variety of high impact colours



Painless Removal

Easily remove floor markings without damaging the floor or leaving adhesive residue.

- Does not chip and flake when being removed - comes off in one piece
- Clean removal without any unsightly adhesive residue or damage to the floor

Easy application

Quickly lay down smooth, straight lines – without the help of co-workers.

- Can be easily applied by one person working alone
- Stiff polyester with liner prevents tape stretching and reduces wrinkles and wavy uneven lines
- No special floor preparation required – just clean with common detergents
- For maximum performance, apply ToughStripe Floor Marking products to flat, non-coated concrete



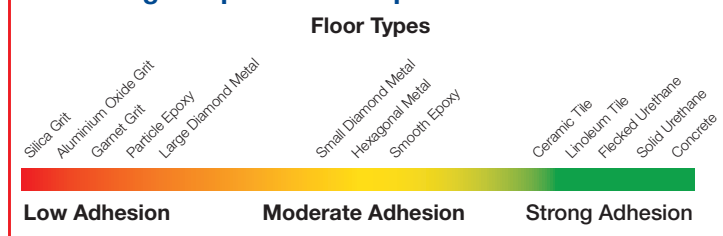
Die-Cut shapes

Use different shapes, colours and sizes for more effective, durable floor markings.

- Dashes, dots, arrows, footprints, numbers, letters and corner marks (L, T and shapes)
- Longer lasting markings – Minimises the risk of damage and facilitates fast repair
- Selected dashes, dots and arrows are pre-spaced on transfer tape, making it incredibly easy to lay down straight evenly spaced lines



ToughStripe™ Floor Tape Adhesion Rates



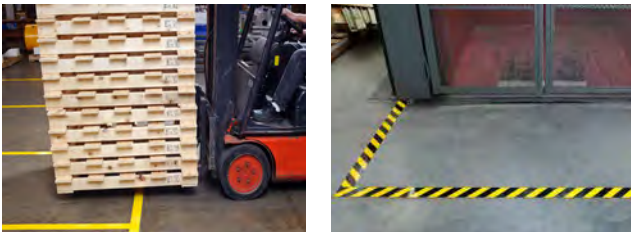
Request a sample to try ToughStripe in your own environment, visit www.bradyeurope.com/ToughStripe

Brady B-514 Floor marking polyester

ToughStripe™ floor marking products are made with Brady's B-514 polyester. ToughStripe products are ideal for marking aisles, passageways and storage locations, and pointing out important safety equipment and egress paths.

- 0.2 mm thickness
- Service temperature range of -18°C to 54°C
- Application conditions: min. 5°C, dry floor
- Recommended for indoor use and dry environment
- Resistant to harsh chemicals
- Exceeds safety standards for clean, dry non-slip surfaces per OSHA 1910.22

Floor marking tape



Order Ref.	Width (mm)	Length (m)	Colour	
104340	76.20	30.48 m	Black	
104341	76.20	30.48 m	White	
104342	76.20	30.48 m	Yellow	
104343	76.20	30.48 m	Red	
104344	76.20	30.48 m	Blue	
104345	76.20	30.48 m	Green	
104346	76.20	30.48 m	Orange	
104347	76.20	30.48 m	Black & Yellow	
104348	76.20	30.48 m	Red & White	
104349	76.20	30.48 m	Black & White	
121914	76.20	30.48 m	Black on White	
121917	76.20	30.48 m	Red on White	
132431	76.20	30.48 m	Red on Yellow	
132434	76.20	30.48 m	Black on Orange	
132437	76.20	30.48 m	Green on White	
132440	76.20	30.48 m	Blue on Yellow	
134087	76.20	30.48 m	Purple	
134090	76.20	30.48 m	Brown	
134093	76.20	30.48 m	Grey	
104310	50.80	30.48 m	Black	
104311	50.80	30.48 m	White	
104312	50.80	30.48 m	Yellow	
104313	50.80	30.48 m	Red	
104314	50.80	30.48 m	Blue	
104315	50.80	30.48 m	Green	
104316	50.80	30.48 m	Orange	
104317	50.80	30.48 m	Black & Yellow	
104318	50.80	30.48 m	Red & White	
104319	50.80	30.48 m	Black & White	

Order Ref.	Width (mm)	Length (m)	Colour	
121913	50.80	30.48 m	Black on White	
121916	50.80	30.48 m	Red on White	
132430	50.80	30.48 m	Red on Yellow	
132433	50.80	30.48 m	Black on Orange	
132436	50.80	30.48 m	Green on White	
132439	50.80	30.48 m	Blue on Yellow	
134086	50.80	30.48 m	Purple	
134089	50.80	30.48 m	Brown	
134092	50.80	30.48 m	Grey	
104370	101.60	30.48 m	Black	
104371	101.60	30.48 m	White	
104372	101.60	30.48 m	Yellow	
104373	101.60	30.48 m	Red	
104374	101.60	30.48 m	Blue	
104375	101.60	30.48 m	Green	
104376	101.60	30.48 m	Orange	
104377	101.60	30.48 m	Black & Yellow	
104378	101.60	30.48 m	Red & White	
104379	101.60	30.48 m	Black & White	
121915	101.60	30.48 m	Black on White	
121918	101.60	30.48 m	Red on White	
132432	101.60	30.48 m	Red on Yellow	
132435	101.60	30.48 m	Black on Orange	
132438	101.60	30.48 m	Green on White	
132441	101.60	30.48 m	Blue on Yellow	
134088	101.60	30.48 m	Purple	
134091	101.60	30.48 m	Brown	
134094	101.60	30.48 m	Grey	



Custom ToughStripe tape

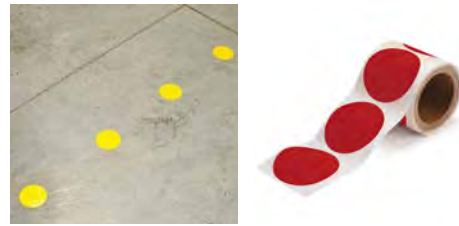
- Pre-printed tape with your custom message
- Die cut numbers and letters for safety, lean and other applications
- Specific die cut shape sizes
- Any colour you need, just provide a PMS number
- Striped or checkered tape available

Caution ESD area floor marking tape



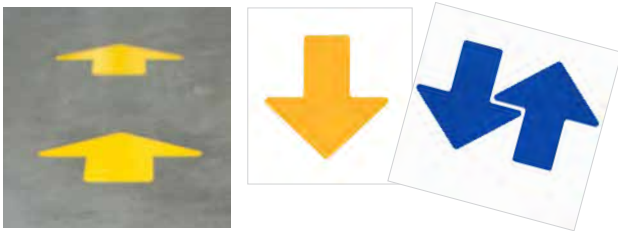
Order Ref.	Width (mm)	Length (m)	Colour	Symbol
121364	50.80	30.48	Black on Orange	QA INSPECTION AREA
121365	76.20	30.48	Black on Orange	QA INSPECTION AREA
121366	101.60	30.48	Black on Orange	QA INSPECTION AREA
121367	50.80	30.00	Yellow	CAUTION ESD AREA
121368	76.20	30.00	Yellow	CAUTION ESD AREA
121369	101.60	30.00	Yellow	CAUTION ESD AREA

Dots - 350 / roll



Order Ref.	Diameter (mm)	Colour	Symbol
104400	88.90	Red	●
104401	88.90	Green	●
104402	88.90	Blue	●
104403	88.90	Yellow	●
104404	88.90	Black	●
104405	88.90	White	○

Arrows - 100 / package



Order Ref.	Width (mm)	Height (mm)	Colour	Symbol
104412	50.80	127.00	Red	➔
104413	50.80	127.00	Green	➔
104414	50.80	127.00	Blue	➔
104415	50.80	127.00	Yellow	➔
104416	50.80	127.00	Black	➔
104417	50.80	127.00	White	➔
104418	76.20	203.20	Red	➔
104419	76.20	203.20	Green	➔
104420	76.20	203.20	Blue	➔
104421	76.20	203.20	Yellow	➔
104422	76.20	203.20	Black	➔
104423	76.20	203.20	White	➔
104424	101.60	254.00	Red	➔
104425	101.60	254.00	Green	➔
104426	101.60	254.00	Blue	➔
104427	101.60	254.00	Yellow	➔
104428	101.60	254.00	Black	➔
104429	101.60	254.00	White	➔

Centre Marks - "+"



Order Ref.	Width (mm)	Height (mm)	Colour	Symbol
104466	50.80	127.00	Red	+
104467	50.80	127.00	Green	+
104468	50.80	127.00	Blue	+
104469	50.80	127.00	Yellow	+
104470	50.80	127.00	Black	+
104471	50.80	127.00	White	+
104472	76.20	203.20	Red	+
104473	76.20	203.20	Green	+
104474	76.20	203.20	Blue	+
104475	76.20	203.20	Yellow	+
104476	76.20	203.20	Black	+
104477	76.20	203.20	White	+
104478	101.60	254.00	Red	+
104479	101.60	254.00	Green	+
104480	101.60	254.00	Blue	+
104481	101.60	254.00	Yellow	+
104482	101.60	254.00	Black	+
104483	101.60	254.00	White	+



Watch the ToughStripe™ Floor Marking videos on www.bradyeurope.com/toughstripe



Use ToughStripe floor marking products to mark:

- aisleways and traffic lanes
- work cell outlines
- equipment storage areas
- material storage areas
- QA inspection areas
- defects/scrap/rework areas
- “Keep clear” zones
- hazard areas

**Footprints - 10 / package
(5 Right - 5 Left)**



Order Ref.	Width (mm)	Height (mm)	Colour
104406	88.90	254.00	Red
104407	88.90	254.00	Green
104408	88.90	254.00	Blue
104409	88.90	254.00	Yellow
104410	88.90	254.00	Black
104411	88.90	254.00	White

**Corner marks - “L”
20 / package**



Order Ref.	Width (mm)	Height (mm)	Colour
104430	50.80	127.00	Red
104431	50.80	127.00	Green
104432	50.80	127.00	Blue
104433	50.80	127.00	Yellow
104434	50.80	127.00	Black
104435	50.80	127.00	White
104442	76.20	203.20	Red
104443	76.20	203.20	Green
104444	76.20	203.20	Blue
104445	76.20	203.20	Yellow
104446	76.20	203.20	Black
104447	76.20	203.20	White
104454	101.60	254.00	Red
104455	101.60	254.00	Green
104456	101.60	254.00	Blue
104457	101.60	254.00	Yellow
104458	101.60	254.00	Black
104459	101.60	254.00	White

**Divider marks - “T”
20/ package**



Order Ref.	Width (mm)	Height (mm)	Colour
104436	50.80	127.00	Red
104437	50.80	127.00	Green
104438	50.80	127.00	Blue
104439	50.80	127.00	Yellow
104440	50.80	127.00	Black
104441	50.80	127.00	White
104448	76.20	203.20	Red
104449	76.20	203.20	Green
104450	76.20	203.20	Blue
104451	76.20	203.20	Yellow
104452	76.20	203.20	Black
104453	76.20	203.20	White
104460	101.60	254.00	Red
104461	101.60	254.00	Green
104462	101.60	254.00	Blue
104463	101.60	254.00	Yellow
104464	101.60	254.00	Black
104465	101.60	254.00	White

Floor marking numbers & letters

- Width: 146.05 mm
- Height: 203.20 mm

Order Ref.	Colour	
121691	Black	A
121692	White	A
121693	Red	A
121694	Green	A
121695	Blue	A
121696	Yellow	A
121697	Black	B
121698	White	B
121699	Red	B
121700	Green	B
121701	Blue	B
121702	Yellow	B
121703	Black	C
121704	White	C
121705	Red	C
121706	Green	C
121707	Blue	C
121708	Yellow	C
121709	Black	D
121710	White	D
121711	Red	D
121712	Green	D
121713	Blue	D
121714	Yellow	D
121715	Black	E
121716	White	E
121717	Red	E
121718	Green	E
121719	Blue	E
121720	Yellow	E
121721	Black	F
121722	White	F
121723	Red	F
121724	Green	F
121725	Blue	F
121726	Yellow	F
121727	Black	G
121728	White	G
121729	Red	G
121730	Green	G
121731	Blue	G
121732	Yellow	G
121733	Black	H
121734	White	H
121735	Red	H
121736	Green	H
121737	Blue	H
121738	Yellow	H

Order Ref.	Colour	
121739	Black	I
121740	White	I
121741	Red	I
121742	Green	I
121743	Blue	I
121744	Yellow	I
121745	Black	J
121746	White	J
121747	Red	J
121748	Green	J
121749	Blue	J
121750	Yellow	J
121751	Black	K
121752	White	K
121753	Red	K
121754	Green	K
121755	Blue	K
121756	Yellow	K
121757	Black	L
121758	White	L
121759	Red	L
121760	Green	L
121761	Blue	L
121762	Yellow	L
121763	Black	M
121764	White	M
121765	Red	M
121766	Green	M
121767	Blue	M
121768	Yellow	M
121769	Black	N
121770	White	N
121771	Red	N
121772	Green	N
121773	Blue	N
121774	Yellow	N
121775	Black	O
121776	White	O
121777	Red	O
121778	Green	O
121779	Blue	O
121780	Yellow	O
121781	Black	P
121782	White	P
121783	Red	P
121784	Green	P
121785	Blue	P
121786	Yellow	P

Order Ref.	Colour	
121787	Black	Q
121788	White	Q
121789	Red	Q
121790	Green	Q
121791	Blue	Q
121792	Yellow	Q
121793	Black	R
121794	White	R
121795	Red	R
121796	Green	R
121797	Blue	R
121798	Yellow	R
121799	Black	S
121800	White	S
121801	Red	S
121802	Green	S
121803	Blue	S
121804	Yellow	S
121805	Black	T
121806	White	T
121807	Red	T
121808	Green	T
121809	Blue	T
121810	Yellow	T
121811	Black	U
121812	White	U
121813	Red	U
121814	Green	U
121815	Blue	U
121816	Yellow	U
121817	Black	V
121818	White	V
121819	Red	V
121820	Green	V
121821	Blue	V
121822	Yellow	V
121823	Black	W
121824	White	W
121825	Red	W
121826	Green	W
121827	Blue	W
121828	Yellow	W
121829	Black	X
121830	White	X
121831	Red	X
121832	Green	X
121833	Blue	X
121834	Yellow	X

Order Ref.	Colour	
121835	Black	Y
121836	White	Y
121837	Red	Y
121838	Green	Y
121839	Blue	Y
121840	Yellow	Y
121841	Black	Z
121842	White	Z
121843	Red	Z
121844	Green	Z
121845	Blue	Z
121846	Yellow	Z

Floor marking numbers & letters (continued)

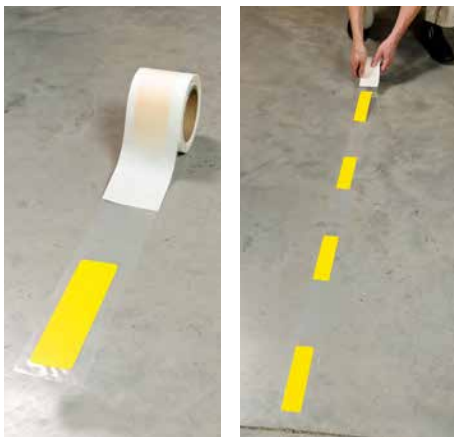
- Width: 146.05 mm
- Height: 203.20 mm

Order Ref.	Colour	
121847	Black	○
121848	White	○
121849	Red	○
121850	Green	○
121851	Blue	○
121852	Yellow	○
121853	Black	1
121854	White	1
121855	Red	1
121856	Green	1
121857	Blue	1
121858	Yellow	1
121859	Black	2
121860	White	2
121861	Red	2
121862	Green	2
121863	Blue	2
121864	Yellow	2
121865	Black	3
121866	White	3
121867	Red	3
121868	Green	3
121869	Blue	3
121870	Yellow	3

Order Ref.	Colour	
121871	Black	4
121872	White	4
121873	Red	4
121874	Green	4
121875	Blue	4
121876	Yellow	4
121877	Black	5
121878	White	5
121879	Red	5
121880	Green	5
121881	Blue	5
121882	Yellow	5
121883	Black	6
121884	White	6
121885	Red	6
121886	Green	6
121887	Blue	6
121888	Yellow	6
121889	Black	7
121890	White	7
121891	Red	7
121892	Green	7
121893	Blue	7
121894	Yellow	7

Order Ref.	Colour	
121895	Black	8
121896	White	8
121897	Red	8
121898	Green	8
121899	Blue	8
121900	Yellow	8
121901	Black	9
121902	White	9
121903	Red	9
121904	Green	9
121905	Blue	9
121906	Yellow	9
121907	Black	FUNC
121908	White	FUNC
121909	Red	FUNC
121910	Green	FUNC
121911	Blue	FUNC
121912	Yellow	FUNC

Pre-spaced Shapes (Spaced 457 mm apart)



Order Ref.	Diameter (mm)	Width (mm)	Height (mm)	Packaging	Colour	
104526	-	50.80	127.00	52	Red	▶▶▶▶
104527	-	50.80	127.00	52	Green	▶▶▶▶
104528	-	50.80	127.00	52	Blue	▶▶▶▶
104529	-	50.80	127.00	52	Yellow	▶▶▶▶
104554	-	50.80	127.00	52	Black	▶▶▶▶
104555	-	50.80	127.00	52	White	◻◻◻◻
104556	-	50.80	203.20	46	Yellow	▬▬▬▬
142177	-	50.80	203.20	46	White	◻◻◻◻
142178	-	50.80	203.20	46	Black	▬▬▬▬
142179	-	50.80	203.20	46	Red	▬▬▬▬
142180	-	50.80	203.20	46	Blue	▬▬▬▬
142181	-	50.80	203.20	46	Green	▬▬▬▬
104520	88.90	-	-	55	Green	●●●●
104521	88.90	-	-	55	Red	●●●●
104522	88.90	-	-	55	White	○●○●
104523	88.90	-	-	55	Yellow	●●●●
104524	88.90	-	-	55	Blue	●●●●
104525	88.90	-	-	55	Black	●●●●

Pre-printed floor signs

ToughStripe floor signs communicate important safety and warning messages to your employees in areas with foot traffic

Order Ref.	Diameter (mm)	Width (mm)	Height (mm)	Packaging	Colour	
104498	-	457.20	355.60	1	Black & Red on White	
104499	-	457.20	355.60	1	Black on Yellow	
104500	-	457.20	355.60	1	Black & Red on White	
104502	-	457.20	355.60	1	Black on Yellow	
104503	-	457.20	355.60	1	Black on Yellow	
104504	-	457.20	355.60	1	Black on Yellow	
104505	-	457.20	355.60	1	Black on Yellow	
104506	-	457.20	355.60	1	Black on Orange	
104510	-	457.20	355.60	1	Black on Yellow	
104501	431.80	-	-	1	Black on Yellow	
104507	431.80	-	-	1	Black & Green on White	
104508	431.80	-	-	1	Black & Blue on White	
104509	431.80	-	-	1	Black on White	
104511	431.80	-	-	1	Black & Red on White	
104512	431.80	-	-	1	Black on Yellow	
104513	431.80	-	-	1	Black on Yellow	

ToughStripe for use with the BMP71 Label Printer

Ideal for marking aisles, passageways and storage locations.

- Create custom-printed floor labels, with easy 3-step process: print label, position on floor, apply overlamine
- Each kit includes 1 roll of B-483 tape and 1 roll of B-634 overlamine

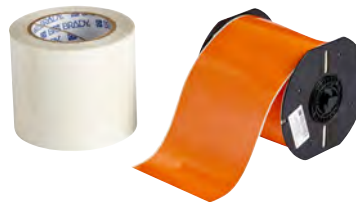
Order Ref.	Width (mm)	Length (m)	Colour	
142140	25.40	15.24	White	☐
142141	50.80	15.24	White	☐
142142	25.40	15.24	Black	■
142143	50.80	15.24	Black	■
142144	25.40	15.24	Yellow	■
142145	50.80	15.24	Yellow	■
142146	25.40	15.24	Red	■
142147	50.80	15.24	Red	■
142148	25.40	15.24	Blue	■
142149	50.80	15.24	Blue	■
142150	25.40	15.24	Green	■
142151	50.80	15.24	Green	■
142152	25.40	15.24	Orange	■
142153	50.80	15.24	Orange	■



ToughStripe for use with the BBP35 and BBP37 label printers

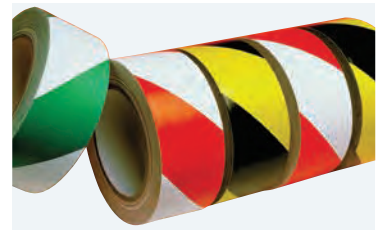
- Create custom-printed floor labels, with easy 3-step process: print label, position on floor, apply overlamine
- Each kit includes 1 roll of B-483 tape and 1 roll of B-634 overlamine

Order Ref.	Width (mm)	Length (m)	Colour	
139928	101.00	30.40	Orange	■
139929	57.00	30.40	Orange	■
139930	29.00	30.40	Orange	■
139931	101.00	30.40	Black	■
139932	57.00	30.40	Black	■
139933	29.00	30.40	Black	■
139934	101.00	30.40	Green	■
139935	57.00	30.40	Green	■
139936	29.00	30.40	Green	■
139937	101.00	30.40	Blue	■
139938	57.00	30.40	Blue	■
139939	29.00	30.40	Blue	■
139940	101.00	30.40	Red	■
139941	57.00	30.40	Red	■
139942	29.00	30.40	Red	■
139943	101.00	30.40	Yellow	■
139944	75.00	30.40	Yellow	■
139945	57.00	30.40	Yellow	■
139946	29.00	30.40	Yellow	■
139947	101.00	30.40	White	☐
139948	75.00	30.40	White	☐
139949	57.00	30.40	White	☐
139950	29.00	30.40	White	☐



Warning tapes

- Self-adhesive warning film for marking pillars, pylons, the edges of walls, gate arches and lifts
- Extremely durable (0.138 mm thick)
- Waterproof, oil, alkali and acid resistant
- Material: Self-adhesive PVC
- Roll length: 33 m
- Packaging: 1 roll



Article No.	Width (mm)	Colour	
255311	38.00	Black & Yellow	
255312	50.00	Black & Yellow	
255313	75.00	Black & Yellow	
255295	38.00	Red & White	
255296	50.00	Red & White	
255297	75.00	Red & White	

i Anti-skid Laminated Polyester (B-7538) custom tapes available on request.

Durable marking tapes

Colours are sealed beneath a protective layer of abrasion resistant clear laminate.

- Aggressive adhesive holds on almost any clean, dry surface
- Markings stand up to toughest conditions - indoors or out
- Material: Self-adhesive vinyl (B-950)
- Standard Package: 1 roll
- Length: 16.5 m



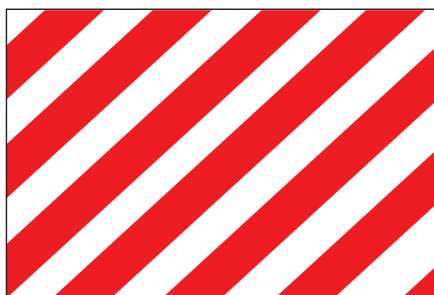
Article No.	Width (mm)	Colour	
055290	25.00	Black & White	
055291	38.00	Black & White	
055292	50.00	Black & White	
055293	75.00	Black & White	
055300	25.00	Black & Yellow	
055301	38.00	Black & Yellow	
055302	50.00	Black & Yellow	
055303	75.00	Black & Yellow	
055312	38.00	Magenta & Yellow	
055313	50.00	Magenta & Yellow	
055314	75.00	Magenta & Yellow	
055294	25.00	Red & White	
055295	38.00	Red & White	
055296	50.00	Red & White	
055297	75.00	Red & White	

Aisle marking tapes



- Long lasting, sticks fast to surfaces
- Material: Self-adhesive Vinyl (B-726)
- Length: 33 m
- Packaging: 1

Article No.	Width (mm)	Colour	
058200	50.00	Yellow	
058250	75.00	Yellow	
058203	50.00	White	
058253	75.00	White	
058201	50.00	Red	
058251	75.00	Red	
058202	50.00	Green	
058252	75.00	Green	
058220	50.00	Blue	
058221	75.00	Blue	
058222	50.00	Black	
058223	75.00	Black	



Warning panels

Can be used wherever there are potential dangers to the work force.

Designed to give early warning about trucks, loading platforms, posts and fork-lift trucks.

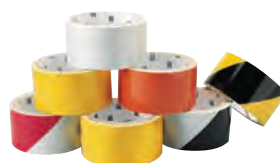
- Material: B-7541 - Laminated Polyester

Article No.	Height (mm) x Width (mm)	Colour	Packaging
255322	286.00 x 428.00	Red & White	10

Reflective stripes & solid colour tapes

These tapes give an extra margin of safety during blackouts, at night, or in low light conditions.

- Material: Reflective Adhesive Material (B-957)
- Length: 4.5 m
- Standard Package: 1 roll



Article No.	Width (mm)	Colour	
Reflective Solid Colour Tape			
078989	50.00	Orange	
078990	75.00	Orange	
078985	50.00	White	
078987	75.00	White	
078986	50.00	Yellow	
078988	75.00	Yellow	

Article No.	Width (mm)	Colour	
Reflective Stripes Tape			
076310	50.00	Black & White	
076309	50.00	Red & White	
076313	75.00	Red & White	
076308	50.00	Black & Yellow	
076312	75.00	Black & Yellow	



PaintStripe & floor marking paint

Fast and easy floor marking with PaintStripe

Brady now offers line-painting stencils for floor-marking applications. These stencils offer a convenient and precise solution wherever painted lines are preferred to help create a safe, organised, and productive work environment. PaintStripe Floor Marking Stencils are available in both continuous and dashed line formats; line widths of 50.80 mm, 76.20 mm or 101.60 mm; and two adhesive types to suit a range of floor surface types and conditions.



Increase workplace efficiency

Clear visuals, like safety signs and floor marking, can communicate important information exactly where the information is needed. They help create an efficient, lean workplace by supporting employees to quickly and easily recognise safe walking areas, forklift lanes, storage locations and specific production areas.

Precise & easy

Marking floors can offer great benefits, but painting a precise line on a factory floor can be quite time consuming.

- With Brady's PaintStripe Floor Marking Stencil, precise lines can be painted a lot faster.
- Distance markings on the stencils enable users to exactly map out entire floor lines or areas before applying paint.
- Equipped with Brady adhesives, the PaintStripe stencil can quickly and securely mask floor line edges and is easy to remove at the same time in order to achieve precise floor markings.

Accelerating the application of painted floor marking like this, minimises project preparation time and disruption of normal operations.

Applications

Brady's PaintStripe is available with two adhesive types to suit a range of floor surface types. Painted floor marking using PaintStripe stencils is ideal to increase efficiency:

- in outdoor applications and also on high traffic factory floors
- in heavy manufacturing facilities
- in facilities with wet floors, harsh washdown or floor cleaning protocols and on floors frequently exposed to chemicals

B-518 for clean, polished floors

Article No.	Description	Width (mm)	Length (m)
148820	PaintStripe Stencil - Continuous Line	50.80	30.50
148815	PaintStripe Stencil - Dashed Line	50.80	30.50
148808	PaintStripe Stencil - Continuous Line	50.80	152.40
148823	PaintStripe Stencil - Dashed Line	50.80	152.40
148814	PaintStripe Stencil - Continuous Line	76.20	30.50
148819	PaintStripe Stencil - Continuous Line	76.20	152.40
148806	PaintStripe Stencil - Continuous Line	101.60	30.50
148816	PaintStripe Stencil - Continuous Line	101.60	152.40

B-519 for dull, worn surfaces and rough or textured floor applications

Article No.	Description	Width (mm)	Length (m)
148813	PaintStripe Stencil - Continuous Line	50.80	30.50
148812	PaintStripe Stencil - Dashed Line	50.80	30.50
148822	PaintStripe Stencil - Continuous Line	50.80	152.40
148818	PaintStripe Stencil - Dashed Line	50.80	152.40
148809	PaintStripe Stencil - Continuous Line	76.20	30.50
148821	PaintStripe Stencil - Continuous Line	76.20	152.40
148810	PaintStripe Stencil - Continuous Line	101.60	30.50
148807	PaintStripe Stencil - Continuous Line	101.60	152.40

Brady recommends that users should perform a test of the stencil/paint combination on the actual floor surface when planning floor-painting projects. Brady offers no-charge sample rolls of B-518 and B-519 stencils for this purpose.



Easyline™ Floor Marking Paint for industrial marking

- For permanent use
- Supplied in 750 ml aerosol cans which are CFC free
- Does not contain lead or chlorinated solvents
- Produces lines up to 100 metres long, depending on the surface and the width
- Resistant to oil, petrol, grease, water, etc
- Packaging: Sold in packs of 6

Article No.	Colour	Description
225005	Blue	Permanent Easyline Paint - Blue
225006	Green	Permanent Easyline Paint - Green
225007	Orange	Permanent Easyline Paint - Orange
225008	Black	Permanent Easyline Paint - Black
225009	Grey	Permanent Easyline Paint - Grey
255353	Yellow	Permanent Easyline Paint - Yellow
255354	White	Permanent Easyline Paint - White
255355	Red	Permanent Easyline Paint - Red



EasyLine™ Edge Paint Applicator

Easy to use wheeled Easyline™ Line Marking Paint applicator. Mark 3 different line widths, 50 mm, 75mm & 100 mm with one machine. Ensures clean, precise lines. Total visibility of line marking during application. Rear wheels are adjustable to allow for line marking close to walls and racks.

Article No.	Description
255351	Easyline™ Edge Paint Applicator





Brady offers a wide range of photoluminescent products. These indicate danger zones, even in complete darkness. In case of an emergency, these products will help your employees to find their way out of a dark room.

PSPA Material Classification		
Minimum Luminance		
Class	After 10 minutes	After 60 minutes
A	25 mcd/m ²	3 mcd/m ²
B	50 mcd/m ²	7 mcd/m ²
C	140 mcd/m ²	20 mcd/m ²
D	260 mcd/m ²	35 mcd/m ²

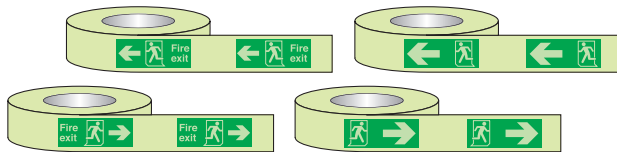
mcd = Millicandela



Glow-in-the-dark warning tapes

- Material: Self-adhesive photoluminescent polyester

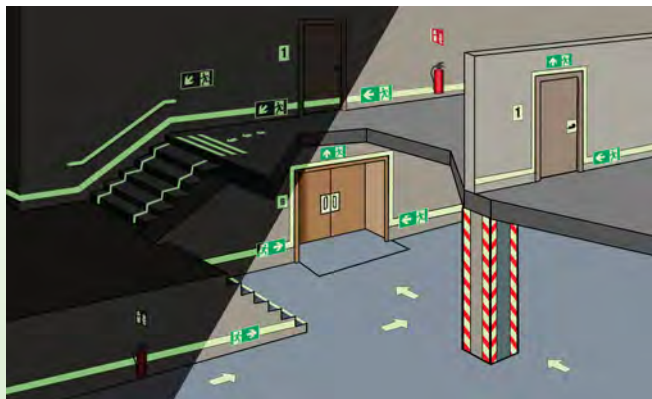
Article No.	Width (mm)	Length (m)	Class
224071	25.00	9.00	Class A
224072	50.00	9.00	Class A
836794	20.00	10.00	Class B
836795	40.00	10.00	Class B
836796	50.00	10.00	Class B
836797	80.00	10.00	Class B
836798	50.00	10.00	Class C
836802	50.00	1.00	Class B
836803	50.00	1.00	Class C



Glow-in-the-dark warning tapes with legend

- Material: Self-adhesive photoluminescent polyester
- Standard Package: 1 roll (10 m)

Article No.	Width (mm)	Description	Legend	Class
836788	40.00	Emergency exit (left)	–	Class B
836793	40.00	Emergency exit (left)	Fire exit	Class B
836789	80.00	Emergency exit (left)	–	Class B
836792	80.00	Emergency exit (left)	Fire exit	Class B
836790	40.00	Emergency exit (right)	–	Class B
836786	40.00	Emergency exit (right)	Fire exit	Class B
836791	80.00	Emergency exit (right)	–	Class B
836787	80.00	Emergency exit (right)	Fire exit	Class B



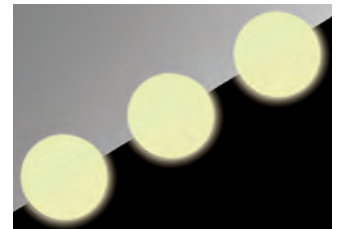
Safety Signage

Contact your Brady distributor for the Safety Signage catalogue.

Glow-in-the-dark shapes

- Material: Rigid Photoluminescent Aluminium (B-7524)
- Article No. 836824 - Material: Class B Photoluminescent Polyester (B-7568)
- Article No. 224077 - Material: Class C Rigid Photoluminescent Aluminium (B-7524)
- Article No. 836823 - Material: Class B Photoluminescent Polyester (B-7568)

Article No.	Height (mm) x Width (mm)	Diameter (mm)	Description	Packaging	Class
836821	100.00 x 100.00		Glow-in-the-dark Arrows	6	Class B
224073	210.00 x 85.00		Glow-in-the-dark anti-skid footprint - Right foot	1	Class C
224074	210.00 x 85.00		Glow-in-the-dark anti-skid footprint - Left foot	1	Class C
836824	90.00 x 40.00		Glow-in-the-dark Footprints	20	Class B
224077		50.00	Glow-in-the-dark anti-skid floor marking dots	10	Class C
836823		75.00	Glow-in-the-dark Dots	20	Class B



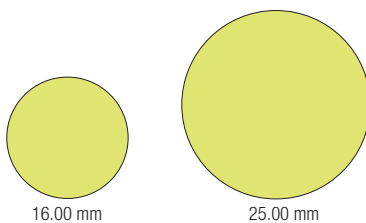
Door handle backgrounds

- Material: Photoluminescent Polyester (B-324)

Article No.	Height (mm) x Width (mm)	Description	Packaging	Class
224075	255.00 x 100.00	Door handle background - Left turn	1	Class A
224076	255.00 x 100.00	Door handle background - Right turn	1	Class A



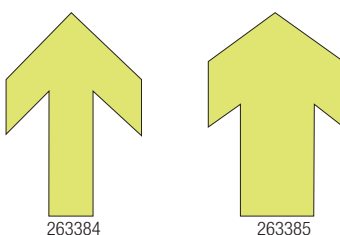
Photoluminescent individual dots (self-adhesive)



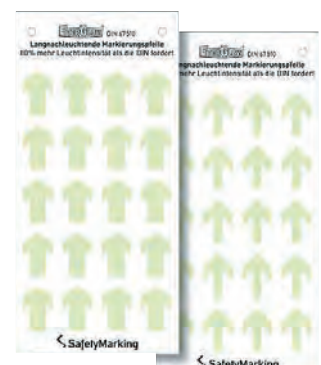
Article No.	Diameter (mm)	Description	Packaging	Class
263382	16.00	Photoluminescent individual dots (Self-adhesive)	40	Class A
263383	25.00	Photoluminescent individual dots (Self-adhesive)	15	Class A

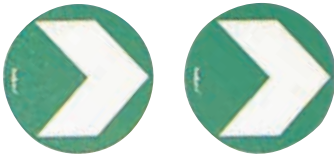


Photoluminescent individual arrows (self-adhesive)



Article No.	Height (mm) x Width (mm)	Description	Packaging	Class
263384	18.00 x 27.00	Photoluminescent individual arrows - Narrow	20	Class A
263385	18.00 x 27.00	Photoluminescent individual arrows - Wide	20	Class A





Photoluminescent floor marking arrows (self-adhesive)

Article No.	Diameter (mm)	Description	Packaging	Class
263387	95.00	Photoluminescent arrow with anti-skid top	10	Class A



Photoluminescent arrows – rectangular (self-adhesive)

Article No.	Height (mm) x Width (mm)	Description	Packaging	Class
251920	175.00 x 110.00	Photoluminescent arrow with anti-skid top	10	Class A



Anti-skid photoluminescent L-Shape

These pre-cut “L”-shaped markers have an anti-skid coating and indicate clearly the edges of stairs in the dark.

Article No.	Height (mm) x Width (mm)	Description	Packaging	Class
836799	75.00 x 25.00	Glow-in-the-dark Warning Tape	200	Class C



Photoluminescent light switch markers

Small shapes to put on switch for easy and quick access. Simply stick these markers onto your light switches for easy location in the dark.

Article No.	Height (mm) x Width (mm)	Description	Packaging	Class
836825	8.00 x 15.00	Glow-in-the-dark Shapes	80	Class B



Glow-sticks

Translucent plastic tube containing substance making light through chemiluminescence. 12 hours light source without any external energy source. The light cannot be turned off and can be used only once.

Article No.	Height (mm)	Colour	Description	Packaging
836826	150.00	Photoluminescent	Glow-in-the-dark Accessories	10

Note: Glow-sticks are photoluminescent yellow. Other colours available on request.

Warning tape: standard luminous intensity

Article No.	Colour	Width (mm)	Length (m)	Packaging	Class
836813	Black/Photoluminescent	40.00	10.00	1	Class B
836814	Black/Photoluminescent	80.00	10.00	1	Class B
836817	Green/Photoluminescent	40.00	10.00	1	Class B
836818	Green/Photoluminescent	80.00	10.00	1	Class B
836819	Red/Photoluminescent	40.00	10.00	1	Class B
836820	Red/Photoluminescent	80.00	10.00	1	Class B



Glow-in-the-dark arrow tape

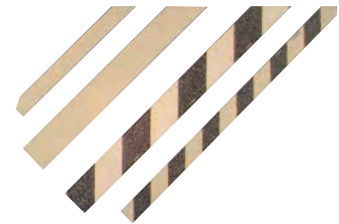
Article No.	Colour	Width (mm)	Length (m)	Packaging	Class
Glow-in-the-dark arrow tape - Arrow-style					
090973	Green on Photoluminescent	50.00	4.50	1	Class A Arrow
090974	Green on Photoluminescent	75.00	4.50	1	Class A Arrow
836815	Green on Photoluminescent	40.00	10.00	1	Class B Arrow
836816	Green on Photoluminescent	80.00	10.00	1	Class B Arrow
Glow-in-the-dark arrow tape - V-Style					
090971	Green on Photoluminescent	50.00	4.50	1	Class A Chevron
090972	Green on Photoluminescent	75.00	4.50	1	Class A Chevron



Photoluminescent anti-skid strips

These self-adhesive aluminium anti-skid strips are ideal for marking the edges of stairs and doorways. They are available in a standard luminous intensity version and a high luminous intensity version.

Article No.	Colour	Width (mm)	Length (m)	Packaging	Class
Photoluminescent Anti-skid Strips - Aluminium High intensity / Striped					
251930	Black/Photoluminescent	30.00	0.80	1	Class C
251932	Black/Photoluminescent	50.00	0.80	1	Class C
Photoluminescent Anti-skid Strips - Aluminium High intensity					
251926	Photoluminescent	30.00	0.80	1	Class C
251928	Photoluminescent	50.00	0.80	1	Class C
Photoluminescent Anti-skid Strips - Aluminium Standard intensity					
251925	Photoluminescent	30.00	0.80	1	Class B



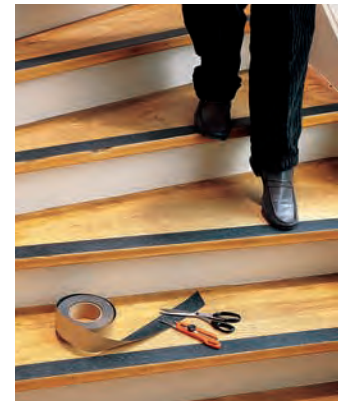
Roll-mounted anti-skid tape

Anti-Skid tape helps to prevent slipping and falling on wet or slippery floors. The rugged polyester tape is adhesive backed and coated with thousands of particles of durable aluminium oxide grit.

- Bonds permanently to clean, dry floors
- Works indoors or outdoors
- Withstands grease and oil
- Eliminates masking clean-up and drying time



Article No.	Colour	Length (m)	Packaging
Tape width: 25.00 mm			
078189	Black	18.00	1
Tape width: 50.00 mm			
078190	Black	18.00	1
078188	Clear	18.00	1
078182	Green	18.00	1
078184	Orange	18.00	1
078198	Red	18.00	1
078187	White	18.00	1
078183	Yellow	18.00	1
Tape width: 100.00 mm			
078191	Black	18.00	1
078199	Red	18.00	1
078092	Yellow	18.00	1
Tape width: 150.00 mm			
078193	Black	18.00	1
Tape width: 300.00 mm			
078194	Black	18.00	1



Anti-skid Tape die-cut cleats

Installation is easy, just peel off the protective liner and press in place.

- Material: Adhesive backed plastic cleat

Article No.	Colour	Height (mm) x Width (mm)	Packaging
078177	Red	140.00 x 140.00	50
078196	Black	140.00 x 140.00	50
078192	Black	19.00 x 600.00	50
078195	Black	150.00 x 600.00	50



Anti-skid reflective & glow-in-the-dark die-cut cleats

Provides an extra margin of safety at night, during blackouts or in low light conditions.

Article No.	Description	Height (mm) x Width (mm)	Packaging
078162	Glow-in-the-Dark Die-Cut Cleats - Black	150.00 x 600.00	24



Anti-skid tape/hazard marking die-cut cleats

The Anti-skid tape provides traction on slick floors, while the printed message signals a visual warning.

Article No.	Height (mm) x Width (mm)	Legend	Packaging
078160	152.40 x 609.60	Caution	24
078163	152.40 x 609.60	Watch your step	24



Striped anti-skid tape

This bright yellow and black striped Anti-skid Tape aids visibility.

- Material: Adhesive backed plastic tape, oxide grit coated
- Colour: Black & Yellow

Article No.	Width (mm)	Length (m)	Packaging
078146	25.00	18.00	1
078147	50.00	18.00	1
078148	75.00	18.00	1
078149	100.00	18.00	1
078150	150.00	18.00	1



Barricade tapes

Visual barricading provides fast on-the-spot warning of potential dangers.

The non-adhesive tape can be used for temporary outdoor or permanent indoor applications. This tape can be tied, stapled or nailed to posts, fences or metal barricades.

- Material: Polyethylene
- Thickness: 0.075 mm
- Size: 75.00 mm x 250 m
- Packaging: 1 roll

Article No.	Legend
-------------	--------



256654



256660

Article No.	Legend
-------------	--------



256858



256860

Striped Barricade Tape

- Thickness: 0.03 mm
- Size: 75.00 mm x 500 m

Article No.	Colour
-------------	--------



291425



291426



Custom products available on request:

- Standard dimensions: 50mm x 250m and 75mm x 250m
- Background colours: Green, Orange, Red, Yellow, Blue, White
- Print of text and/or logo
- From 24 rolls



Super-strong barricade tape

Long-lasting hazard protection, even with long distances between tie points.

Reinforced Barricade Tape is stronger than ordinary barricade tape, making long stretches between tie points easy. No stretch or sag in sunlight or wind and it's tough enough to be used again.

- Width: 75.00 mm
- Length: 100 m
- Packaging: 1 roll



Custom products available on request:

- Standard dimensions: 50mm x 250m and 75mm x 250m
- Background colours: Green, Orange, Red, Yellow, Blue, White
- Print of text and/or logo
- From 24 rolls

Underground warning tape

Underground tape is buried 30 to 45 cm below ground level. Digging crews receive warning of buried lines and cables, allowing a margin of safety between the tape and the buried line.



- Available in 2 versions: detectable and undetectable
- Easily Seen
- Easily Identified - by means of colour coding
- Convenient - Handy dispensing reel
- Strong - Heavy duty polyethylene material resists acid, alkalis and other soil substances.
- Long Lasting - Coated graphics provide long lasting legibility and hold colour values
- Economical - Compared to the potential cost of line damage, this tape is cost-effective for use over the entire length of the line
- Standard dimensions: 75mm x 250m and 150mm x 250m
- Minimum order quantity: 50 rolls of 75mm x 250m or 25 rolls of 150mm x 250m
- Black print on any background colour

Contact us to get an offer for your project.



Did you know? - MetalPhoto® photosensitive anodised aluminium

MetalPhoto® is the leading material for durable, long-lasting barcode labels, asset tags and variable information plates.

Made of photosensitive anodised aluminium, these reliable custom tags and labels are designed to work with your specific asset tracking system and remain readable for more than 30 years outdoors.

MetalPhoto® can be used for the identification of underground lines and cables.



Anodic Layer

The glass-clear, sapphire-hard anodized layer resists chemicals, paint, abrasion and dirt.

Sealed Image

Black graphics are metallic silver particles that hold up to extreme heat and sunlight exposure.

Aluminum Layer

The rigid aluminum base will not peel, crack or delaminate.

Warning posts

Ideal for controlling and directing foot traffic. Suitable for warehouses, factories, offices, etc.

Chains and ribbons can be attached to the sturdy 90 cm high posts. The posts are available in one-colour or two-colour versions (stripes of 10 cm wide).

- Material: polyethylene
- Non-conductive: the posts can be used for barricading electrically hazardous installations
- Built-in ultraviolet inhibitors: block out ultraviolet rays to prevent colours from fading
- Colours: they stay bright and eye-catching, even after years of use
- Sizes: height: 900.00 mm, outside diameter: 40.00 mm

Article No.	Colour	Height (mm)	Quantity / Package
Triangular plastic base only (empty - no cement) (29 x 9 cm)			
292245	Black		1
Rubber base only (27 x 5 cm)			
256728	Black		1
Post & triangular plastic base (no cement)			
292240	Black & Yellow	900.00	4
292233	Red	900.00	4
292238	Red & White	900.00	4
292235	White	900.00	4
Post & top (no base)			
292241	Black & Yellow	900.00	1
292244	Red	900.00	1
292242	Red & White	900.00	1
292243	White	900.00	1
Post & rubber base (1,6 kg)			
256724	Black & Yellow	900.00	4
256730	Red	900.00	4
256723	Red & White	900.00	4
256726	White	900.00	4
Post & fillable base (3,7 l)			
256722	Black & Yellow	900.00	4
256729	Red	900.00	4
256721	Red & White	900.00	4
256725	White	900.00	4
Post & cement base (3,5 kg)			
292236	Black & Yellow	900.00	4
292234	Red	900.00	4
292237	Red & White	900.00	4
292239	White	900.00	4
Fillable base only (25 x 6 cm)			
256727	Black		1
Cement base only (29 x 9 cm)			
292246	Black		1
BradyPost Top			
292247	Black		1
292248	Red		1
292249	White		1



Facility maintenance

Find out how on our website:
www.bradyeurope.com/maintenance



WORK FASTER
 WITH CLEAR MAINTENANCE VISUALS

BradyLink® warning post & chain

Barricade potentially hazardous areas indoors or outdoors with portable plastic posts and chains. Their lightweight yet tough construction stands up to years of use in temporary or permanent applications.



The components of the posts and chains are made of polyethylene with the following features:

- Built-in Ultraviolet Inhibitors: Screen out the sun's rays to prevent colours from fading during outdoor use
- Light-weight: chain is lighter than similar metal parts – chain weights 2.7 kg per 25 metres
- Non-rusting: Unlike metal posts and chain BradyLink, plastic parts cannot rust
- Fillable Base: Hollow base can be filled with water or sand for more stable application
- C-hook: Large C-hook holds chain in place. Use open, or closed for greater security



Insert post into base and turn into place. Base may be filled with sand or water to make the assembly more stable.



Drop C-hook into slots, insert post to, and screw into place. Large C-hook holds chain in place.

Brady warning posts

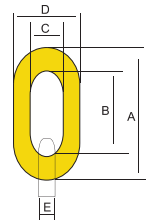
- Post Diameter: 75.00 mm
- Base Diameter: 400.00 mm
- Height: 1040.00 mm

Article No.	Colour	Packaging
092123	Striped Black & Yellow	6
092125	Striped Black & Yellow Reflective	6



Brady warning chain

- Material: Polyethylene
- Standard Package: 25 m (2.7 kg)



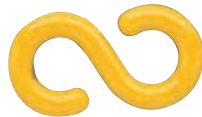
Dimensions

- A: 50.00 mm
- B: 34.00 mm
- C: 12.00 mm
- D: 28.00 mm
- E: 8.00 mm

Article No.	Width (mm)	Height (mm)	Colour
278271	28.00	50.00	Yellow
278268	28.00	50.00	White
278269	28.00	50.00	Red & White
278270	28.00	50.00	Black & Yellow

Brady connecting hooks

- Material: Moulded Polyethylene
- Packaging: 36
- Usage: attaching lengths of chains



Article No.	Width (mm)	Colour
078257	50.00	Yellow
078258	50.00	White
078259	50.00	Black

Brady connecting links

- Material: Moulded Polyethylene
- Packaging: 36
- Usage: for a more permanent application or repairing chain links, these connecting links can be used



Article No.	Width (mm)	Colour
078248	50.00	Black
078247	50.00	White
078246	50.00	Yellow

Message sign

Create an even safer work environment by using these universal signs. The plastic frame simply clips to the Brady posts.

- Kit contains: frame + 2 attachment clips + 1 chain (black, 20 cm)
- Colour: Black
- Packaging: 1
- Signs not included in kit

Article No.	Width (mm)	Height (mm)	Description
292250	210.00	297.00	Message Sign Kit A4



Heavy duty floor stands

Easily transportable, these stands are very useful to carry with and clearly indicate substantial dangers such as slippery zones. They are ideal for hospitals or public halls for example.

- Heavy duty yellow high density polypropylene
- Height (closed): 660.00 mm
- Maintenance free : will not dent or corrode
- Large message area is visible from over 9 metres
- Available with a range of standard messages or as a blank stand



Order Reference				
092110	256700	256701	256702	256704



Order Reference			
256705	256706	256708	256709

Economy floor stands

- Printed on both sides –inside and out- offering two stands for the price of one
- Lightweight corrugated polypropylene material
- Packaging: 1 piece
- Height (closed): 500.00 mm - Width: 300.00 mm

BRADY
Customise-it

Contact your Brady Specialist for more information on customised Floor Stands



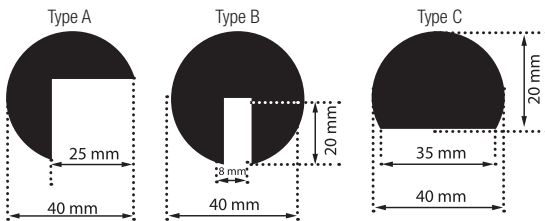
Order Reference		
092284	256711	256712

Polyurethane safety bumpers

Clearly visible, made from polyurethane foam rubber, flexible and sturdy material, optimal shock-absorber.

- 3 colours: black; yellow on black; photoluminescent on black
- 3 models available + 2 corner connecting pieces
- The photoluminescent strips are coated with a film that protects against physical and chemical actions. In the dark, these products give off the light they have absorbed during the day
- Non-toxic and non-radioactive
- Length: 1m.
- Secured with adhesive
- Packaging: 1

Article No.	Type	Colour	Packaging
225011	Type A	Black & Yellow	1
225012	Type A	Black/Photoluminescent	1
225015	Type B	Black & Yellow	1
225018	Type C	Black & Yellow	1
225019	Type C	Black/Photoluminescent	1
225020	2-dimensional corner piece	Black	1



2-dimensional corner piece

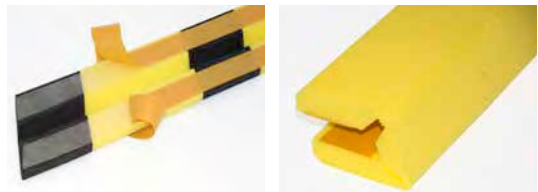
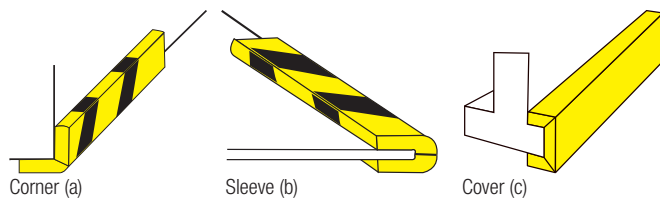
Self-adhesive safety bumpers

Protect corners and edges with these shock-absorbers.

- Shock-absorber made from cellular thermoplastic
- Dual function: indicates hazardous situations and softens any impacts
- Increases safety in the workplace
- Highly resistant against hydrocarbons
- Double-sided adhesive, can be attached to any clean surface
- Choice out of 3 models
- Packaging: 10

Order Ref.	Type	Height (mm)	Length (m)	Colour	Packaging
225022	Corner (a)	110.00	0.68	Black & Yellow	10
225023*	Sleeve (b)	28.00	0.66	Black & Yellow	10
225024	Cover (c)	151.00	0.75	Yellow	10

* not adhesive



Brady Corporation

Our mission is to identify and protect people, products and places



COMPANY OVERVIEW

BRADY was founded in 1914 in Eau Claire, Wisconsin, as W.H. BRADY Co., and renamed BRADY Corporation in 1998. The company began selling products internationally in 1947. In 1984, BRADY went public, with stock trading on the Nasdaq Stock Market, and in 1999, moved trading of its stock to the New York Stock Exchange, where it trades under the symbol BRC. The company's global headquarters is in Milwaukee, Wisconsin.

BRADY MANUFACTURES AND MARKETS:

- products for identification and safety applications such as signs and markers, printing systems and software to produce identification products on-site and on demand
- products for wire identification, including labelling materials and tools for wire and cable marking in the electrical, datacom and telecommunication markets
- high-performance identification products, including labels and signs that remain legible and highly adhesive even in harsh environments
- products that identify people and enhance security by ensuring the right persons are in the right places at the right time

OPERATIONS – SOME FACTS:

- 6500 employees around the world
- Operations in 29 countries
- Distribution in more than 100 countries through more than 4,400 distributor partners



Africa

Randburg, South Africa
Tel.: +27 11 704 3295
Email: africa@bradycorp.com

Benelux

Zelev, Belgium
Tel.: +32 (0) 52 45 78 11
Email: benelux@bradycorp.com

Central & Eastern Europe

Bratislava, Slovakia
Tel.: +421 2 3300 4800
Email: central_europe@bradycorp.com

Denmark

Odense
Tel.: +45 66 14 44 00
Email: denmark@bradycorp.com

France

Roncq
Tel.: +33 (0) 3 20 76 94 48
Email: france@bradycorp.com

Germany, Austria & Switzerland

Egelsbach, Germany
Tel.: +49 (0) 6103 7598 660
Email: germany@bradycorp.com

Hungary

Budaörs
Tel.: +36 23 500 275
Email: central_europe@bradycorp.com

Italy

Gorgonzola
Tel.: +39 02 26 00 00 22
Email: italy@bradycorp.com

Middle East FZE

Dubai, UAE
Tel.: +971 4881 2524
Email: me@bradycorp.com

Norway

Kjeller
Tel.: +47 70 13 40 00
Email: norway@bradycorp.com

Romania

Bucharest
Tel.: +40 21 202 3032
Email: central_europe@bradycorp.com

Russia

Moscow
Tel.: +7 495 269 47 87
Email: central_europe@bradycorp.com

Spain & Portugal

Madrid, Spain
Tel.: +34 900 902 993
Email: spain@bradycorp.com,
portugal@bradycorp.com

Sweden, Finland, Baltic states

Kista, Sweden
Tel.: +46 (0) 8 590 057 30
Email: sweden@bradyeurope.com

Turkey

Istanbul
Tel.: +90 212 264 02 20 / 264 02 21
Email: turkey@bradycorp.com

UK & Ireland

Banbury, UK
Tel.: +44 (0) 1295 228 288
Email: uk@bradycorp.com



To help minimise our impact on the environment, Brady limits its number of reprints. Updated versions are always available for download on www.bradyeurope.com.

 Search for: EUR-M-423-EN

Your distributor