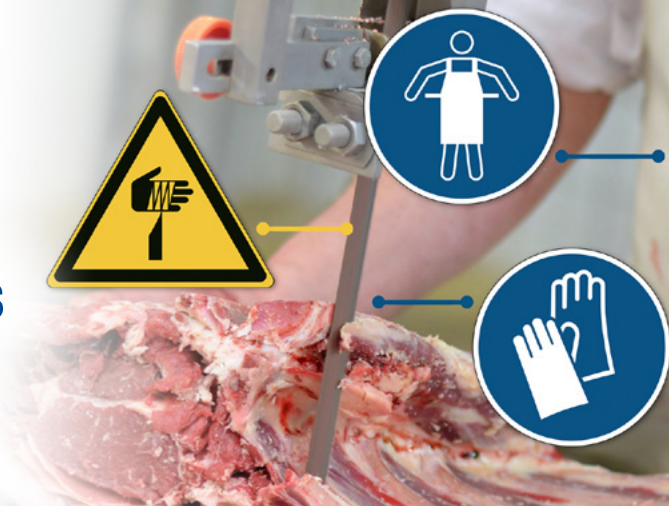


# ToughWash pre-printed signs

Pre-printed safety signs for food industries



[www.bradyeurope.com](http://www.bradyeurope.com)



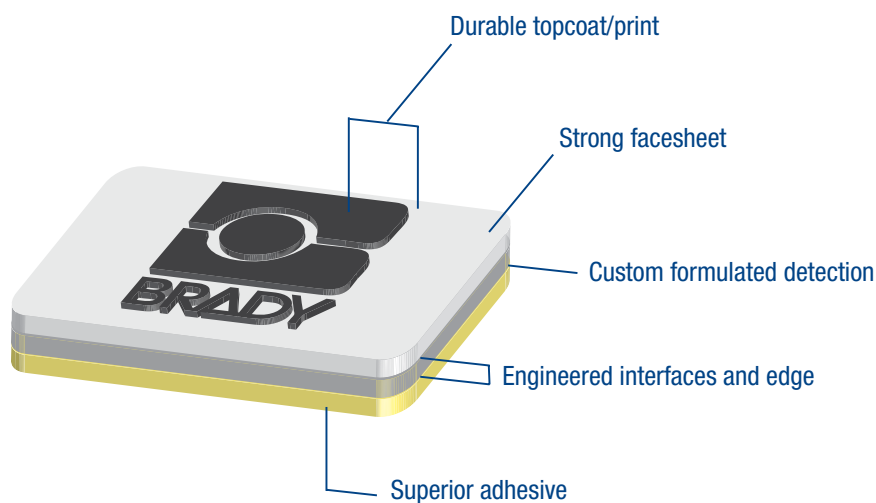
## Increased workplace safety and compliance

Safety signs are a great tool to increase workplace safety and compliance. They can be used to prohibit actions that can be extremely dangerous in specific situations, to warn employees of present danger and to highlight actions required to work in a safe way. They also increase compliance with EU Directive 89/655/EEC on minimum requirements for safety and health while using equipment, and with the EN ISO 7010 and EN ISO 3864 standards. Unfortunately, many safety signs tend to crumble in typical food industry washdown cycles and threaten food safety, an absolute no-go in food processing industries.

## Food safety: OK!

ToughWash signs are designed to avoid food contamination. The signs do not crumble when exposed to cleaning agents or pressure and for additional food security, a metal detectable ToughWash version is available as an extra safeguard. With ToughWash, food industries can increase workplace safety and compliance with safety signs, while upholding the highest levels of food security.

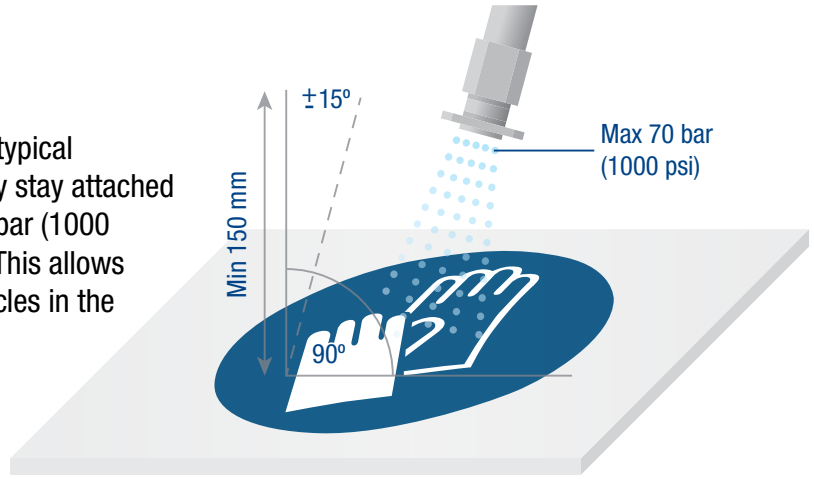
## Ideal detectable label anatomy



**TOUGHWASH**® Harsh Washdown Labels

## Easy to clean

ToughWash signs are easy to clean and resist typical cleaning agents used in the food industry. They stay attached and remain legible, even when exposed to 70 bar (1000 PSI) under a straight angle from 15 cm away. This allows ToughWash signs to resist most washdown cycles in the stringent hygiene requirements faced by food industries.



## Pre-printed and on-site printable

ToughWash labels and signs can be printed at your premises with Brady's printing systems and are also available as standard, pre-printed safety signs that can be implemented without using a Brady printer.



## ToughWash range overview

Brady Material Number	Adhesive (Yes/No)	Rigid/Flexible	Print (Factory/Brady Printer)	Metal Detectable (Yes/No)	Print Colours	Min. Font Size	Availability
B-854	Yes	Flexible	Brady Printer*	Yes	Black	10	Direct
B-855	Yes	Flexible	Brady Printer*	No	Black	10	Direct
B-862	Yes	Flexible	Pre-printed (stock item or custom)	Yes	All	None	Few days
B-863	Yes	Flexible	Pre-printed (stock item or custom)	No	All	None	Few days
B-869	No	Rigid	Factory	Both available	All	None	1 month

\*BBP31/BBP33, S3100, BBP35/BBP37



Watch our videos and get more information at:  
[www.bradyeurope.com/Food](http://www.bradyeurope.com/Food)

